



Baker Atlas

FILE NO:

COMPANY

VULCAN MINERALS INC

API NO:

WELL HURRICANE #1 (BACKSTRETCH #2)
FIELD ST GEORGES BAY
PROVINCE NEWFOUNDLAND

Ver. 3.87

LOCATION:

LIC: 2005-116-01-03

OTHER SERVICES

LAT 377200 LONG 5344600 M

ZDL/CN/DAL/GR

PERMANENT DATUM GL ELEVATION 3.3 M
LOG MEASURED FROM KB 135 M ABOVE P.D.
DRILL MEAS. FROM KELLY BUSHING

ELEVATIONS:
KB 3.3 M
DF
GL 135 M

DATE 10-NOV-2005

RUN 2 TRIP 1

SERVICE ORDER 201776

DEPTH DRILLER 876.0 M

DEPTH LOGGER 875.4 M

BOTTOM LOGGED INTERVAL 870.0 M

TOP LOGGED INTERVAL 245.5 M

CASING DRILLER 177.4 MM @ 245.5 M

CASING LOGGER 245.7 M

BIT SIZE 155.0 MM

TYPE OF FLUID IN HOLE H2O

DENSITY NA VISCOSITY NA

PH NA FLUID LOSS NA

SOURCE OF SAMPLE CIRCULATION

RM AT MEAS. TEMP. 2.10 OHMM @ 2.20 DEGC

RMF AT MEAS. TEMP. 1.664 OHMM @ 1.13 DEGC

RMC AT MEAS. TEMP. 2.603 OHMM @ 1.56 DEGC

SOURCE OF RMF MEASURED

RM AT BHT 2.063 OHMM @ 1.290 DEGC

TIME SINCE CIRCULATION NA

MAX. RECORDED TEMP. 10.38 DEGC

EQUIP. NO. HSL 8616 LOCATION SARINIA

RECORDED BY D. IRONSIDE

WITNESSED BY KARLA SMITH

IN MAKING INTERPRETATIONS OF LOGS OUR EMPLOYEES WILL GIVE CUSTOMER THE BENEFIT OF THEIR BEST JUDGEMENT. BUT SINCE ALL INTERPRETATIONS ARE OPINIONS BASED ON INFERENCES FROM ELECTRICAL OR OTHER MEASUREMENTS, WE CANNOT, AND WE DO NOT GUARANTEE THE ACCURACY OR CORRECTNESS OF ANY INTERPRETATION. WE SHALL NOT BE LIABLE OR RESPONSIBLE FOR ANY LOSS, COST, DAMAGES, OR EXPENSES WHATSOEVER INCURRED OR SUSTAINED BY THE CUSTOMER RESULTING FROM ANY INTERPRETATION MADE BY ANY OF OUR EMPLOYEES.

BOREHOLE RECORD

BIT SIZE	FROM	TO
155.0 MM		

CASING RECORD

SIZE	WEIGHT	GRADE	FROM	TO
244.5 MM	53.6 KG/M	J-55	0.0 M	60.0 M
177.8 MM	25.3 KG/M	H-40	0.0 M	245.5 M

REMARKS

RUN 2 TRIP 1 :

TIME STOP CIRCULATING:
MAXIMUM DEVIATION 5 DEGREES AT METRES.
DAL/ZDL/CN/GR RUN IN COMBINATION.
CNC IS AVERAGE CALIPER CORRECTED.

POOR DAL RESPONSE DUE TO RUGOSE BOREHOLE.
INTEGRATED TRANSIT TIME TICS EVERY: 1.0, 10.0, & 100.0 MSEC.

INTEGRATED BOREHOLE VOLUME TICS EVERY: 0.1, 1.0 & 10.0 M3.
INTEGRATED CEMENT VOLUME TICS EVERY: 0.1, 1.0, & 10.0 M3.

SANDSTONE MATRIX USED: 2.650 G/CM3.

EQUIPMENT DATA

RUN	TRIP	TOOL	SERIES NO.	SERIAL NO.	POSITION
1	1	TTRM	3981XA	179328	FREE
1	1	COM REM	3514XA	153394	FREE
1	1	KNIT	3923XA	186276	FREE
1	1	CN	2446XA	173080	DECENTRALIZED
1	1	ZDL E	2228EA	153328	DECENTRALIZED
1	1	ZDL M	2228MA	153038	PAD DEVICE X-AXIS
1	1	DAL ELEC	1667EA	153562	CENTRALIZED
1	1	DAL MAND	1680MA	154419	CENTRALIZED

INSTRUMENT CONFIGURATION

Source File: /dat1a/pass/vul_hur2/dal-tdg

CABLEHEAD

Series : CABL338
 Mnemonic : CBLH
 Diameter : 8.6 cm
 Weight : 10.9 kg
 Length : 167.6 cm
 Measure Point: 83.8 cm: CABLEHEAD TOP

21.91 m

CABLEHEAD TOP 21.07 m

TTRM SUB

Series : 3981XA
 Mnemonic : TTRM
 Diameter : 9.2 cm
 Weight : 36.4 kg
 Length : 116.8 cm
 Measure Point: 42.2 cm: TEMP MP
 Measure Point: 34.5 cm: RM MP

TEMP MP 19.48 m

RM MP 19.41 m

WTS COMMON REMOTE

Series : 3514XA
 Mnemonic : WTS
 Diameter : 9.2 cm
 Weight : 65.5 kg
 Length : 189.5 cm

DIGITAL SPECTRALOG

Series : 1329XA
Mnemonic : DSL
Diameter : 9.2 cm
Weight : 64.5 kg
Length : 222.8 cm
Measure Point: 48.8 cm: GR MP

GR MP — 15.43 m

COMPENSATED NEUTRON


Series : 2448XA
Mnemonic : CN
Diameter : 9.2 cm
Weight : 68.2 kg
Length : 231.4 cm
Source Type : AM241BE
Strength : 18 curies
Measure Point: 80.3 cm: LSN MP
Measure Point: 68.2 cm: SSN MP

LSN MP — 13.43 m

SSN MP — 13.31 m

Z-DENSLOG

Series : 2228XA
Mnemonic : ZDL
Diameter : 12.4 cm
Weight : 213.6 kg
Length : 564.6 cm
Source Type : CS137
Strength : 2.0 curies
Measure Point: 107.7 cm: SSD MP
Measure Point: 97.3 cm: CAL / ZSPEC MP



SSD MP — 8.06 m
CAL / ZSPEC MP — 7.95 m

KNUCKLE JOINT

Series : 3923XA
Mnemonic : KNJT
Diameter : 8.6 cm
Weight : 21.8 kg
Length : 70.9 cm

ARRAY ACOUSTILOG ELECTRONICS

Series : 1687EA
Mnemonic : DAC
Diameter : 8.6 cm
Weight : 61.8 kg
Length : 238.3 cm

DIGITAL ACOUSTILOG

Series : 1680MA
Mnemonic : DAL
Diameter : 8.6 cm
Weight : 65.9 kg
Length : 388.9 cm
Measure Point: 242.3 cm: T1 MP
Measure Point: 181.4 cm: T2 MP
Measure Point: 89.9 cm: R1 MP

T1 MP — 2.42 m

T2 MP — 1.81 m

R1 MP — 0.90 m

BULL PLUG 3 1/8

0.00 m

TOTAL LENGTH: 21.98 m
 TOTAL WEIGHT: 811.4 kg
 MAX DIAMETER: 12.4 cm

MAIN PASS

ECLIPS 5.0i Dec 17, 2003
 Updates: 1,2,3,32

Pcrplt /main/59

Cplot 7.09
 Pdf_Cpp /main/16

Thu Nov 10 05:56:44 2005
 Fileview 4.67

PARAMETER AND FILTER SUMMARY REPORT

FILE: /data/pass/vul_hur2/1777JxR01.prm
 LOGGING MODE: DEPTH DIRECTION: UP
 TOP DEPTH: 30.861 m BOTTOM DEPTH: 873.557 m

SYMMETRIC FILTER

MEASUREMENT TYPE	PARAMETER	VALUE	UNITS	INTERVAL (m)	
CHT	FILTER ()	medium (1)		TOP	BOTTOM
Y AXIS CALIPER	FILTER ()	light (2)		''	''
TENSION	FILTER ()	medium (1)		''	''
X AXIS CALIPER	FILTER ()	medium (1)		''	''
GR	FILTER ()	medium (1)		''	''
DT24	FILTER ()	light (2)		''	''

BOREHOLE & CEMENT

MEASUREMENT TYPE	PARAMETER	VALUE	UNITS	INTERVAL (m)	
CASING - BOREHOLE & CEMENT VOLUME	CASING O.D.	114.300	mm	TOP	BOTTOM
BIT SIZE	BIT SIZE	155.000	mm	''	''

ACOUSTIC POROSITY

MEASUREMENT TYPE	PARAMETER	VALUE	UNITS	INTERVAL (m)	
DELTA T CURVE SELECTION	DT24 SOURCE	FIRST ARRIVAL DT24		TOP	BOTTOM

ACOUSTIC PICK CONTROL

MEASUREMENT TYPE	PARAMETER	VALUE	UNITS	INTERVAL (m)	
DELTA-T REJECTION RANGE	REJECTION DTmin	131	us/m	TOP	BOTTOM
	REJECTION DTmax	591	us/m	''	''
FIRST ARRIVAL PICK (5 FT)	SEARCH START OFFSET {sfa11*}	252	us	''	''
	SEARCH START OFFSET {sfa12*}	252	us	''	''
	SEARCH START OFFSET {sfa13*}	252	us	''	''
	SEARCH START OFFSET {sfa14*}	252	us	''	''
	SEARCH WINDOW LENGTH	500	us	''	''
	THRESHOLD FACTOR	0.30		''	''
	THRESHOLD MINIMUM {sfa11*}	1.8	pct	''	''
	THRESHOLD MINIMUM {sfa12*}	1.8	pct	''	''
	THRESHOLD MINIMUM {sfa13*}	1.8	pct	''	''
	THRESHOLD MINIMUM {sfa14*}	1.8	pct	''	''
	E3 THRESHOLD	OFF		''	''

ACOUSTIC QUALITY CONTROL

MEASUREMENT TYPE	PARAMETER	VALUE	UNITS	INTERVAL (m)	
CYCLE SKIP LIMIT	CYCLE SKIP LIMIT	100	us	TOP	BOTTOM

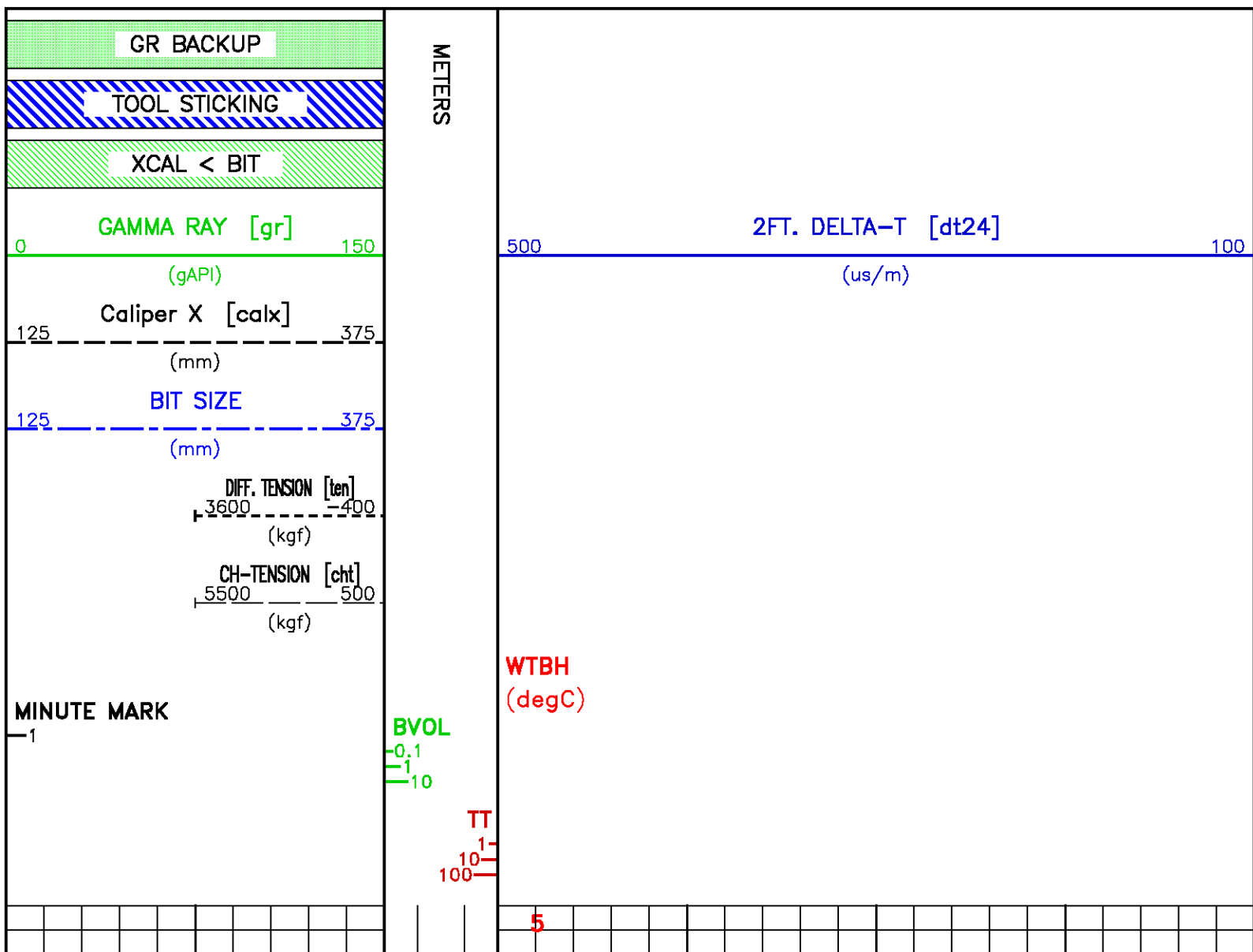
CURVE DESCRIPTION REPORT

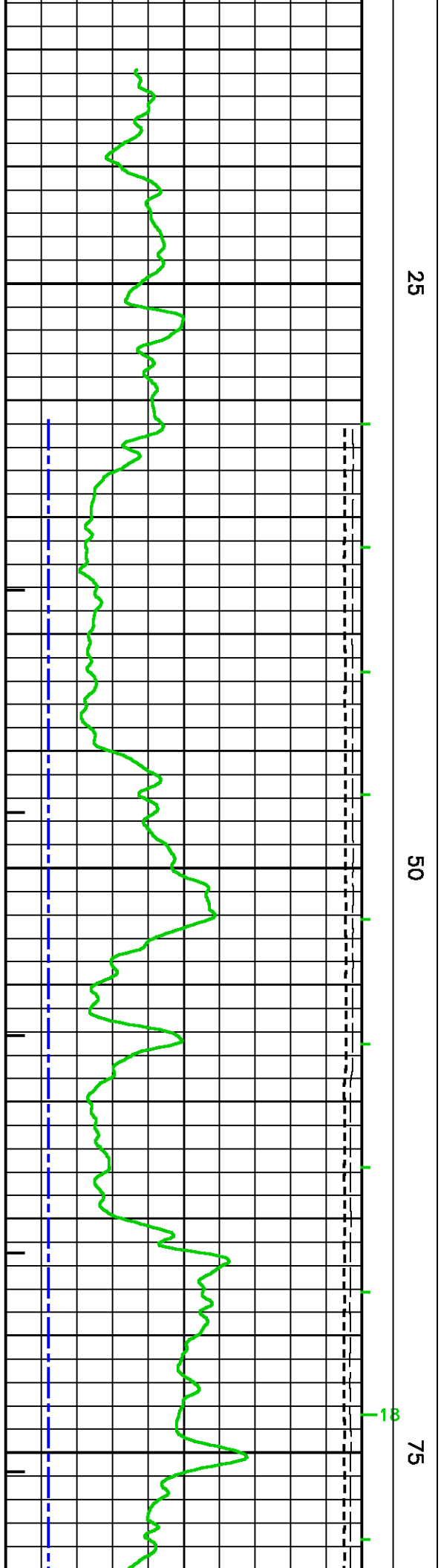
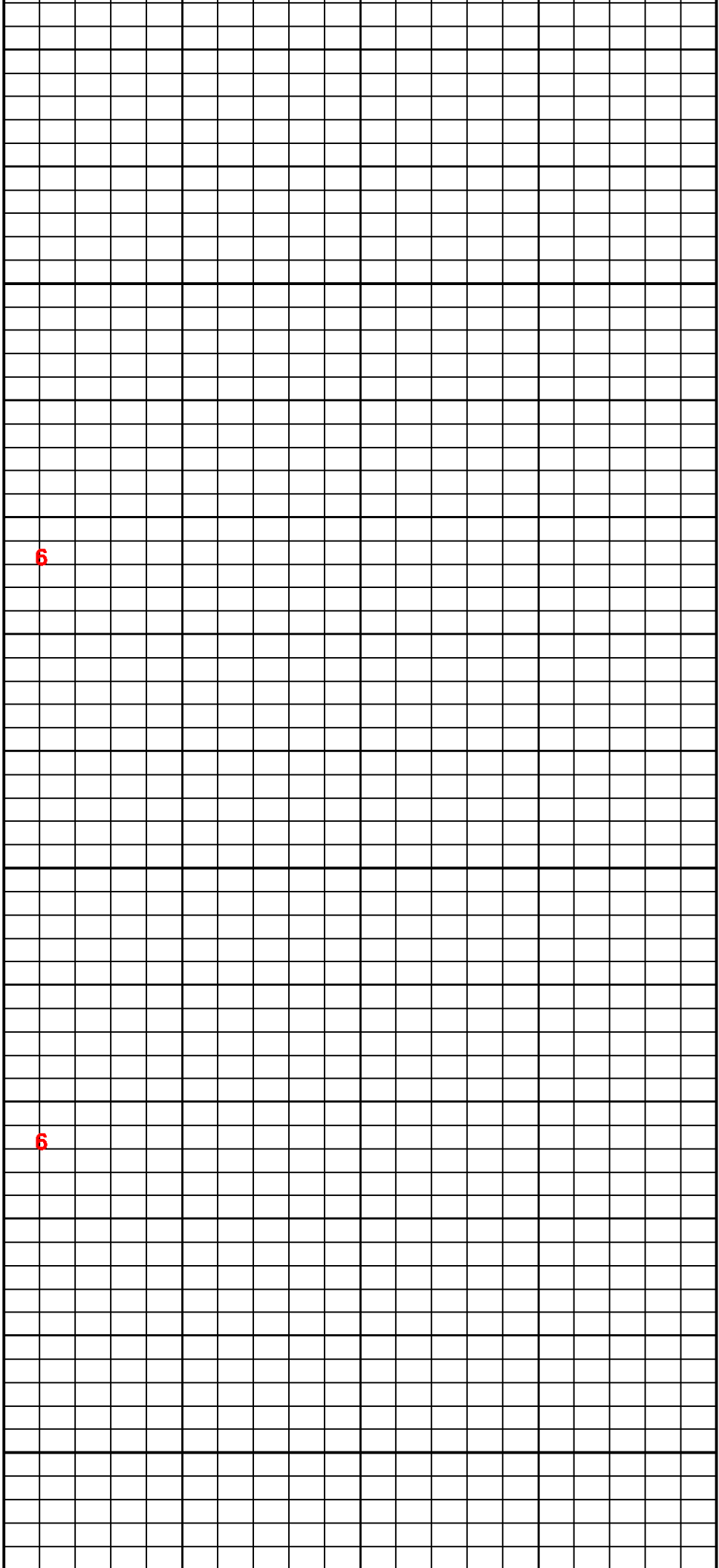
CURVE NAME	CURVE ALIAS	CREATION DATE	CURVE DESCRIPTION
F1:BIT	BIT	Nov 10 05:40:55 2005	BIT SIZE
F1:BVOL	BVOL	Nov 10 05:40:55 2005	BOREHOLE VOLUME
F1:CALX	CALX	Nov 10 05:40:55 2005	CALIPER FROM X AXIS OF X-Y CALIPER(S)
F1:CHT	CHT	Nov 10 05:40:55 2005	CABLE HEAD TENSION
F1:DT24	DT24	Nov 10 05:40:55 2005	INTERVAL TRANSIT TIME OVER 24 INCH INTERVAL
F1:GR	GR	Nov 10 05:40:55 2005	GAMMA RAY
F1:MMRK	MMRK	Nov 10 05:40:55 2005	MINUTE MARK
F1:TEN	TEN	Nov 10 05:40:55 2005	DIFFERENTIAL TENSION
F1:TT	TT	Nov 10 05:40:55 2005	INTEGRATED TRAVEL TIME FROM ACOUSTIC DELTA-T
F1:WTBH		Nov 10 05:40:55 2005	TEMPERATURE OF THE BOREHOLE

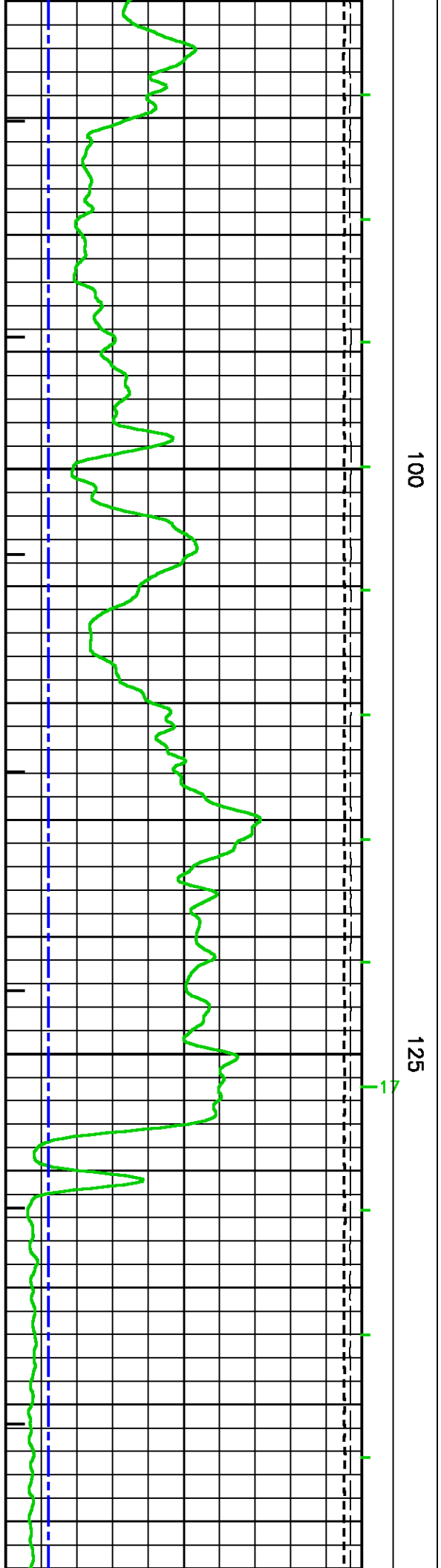
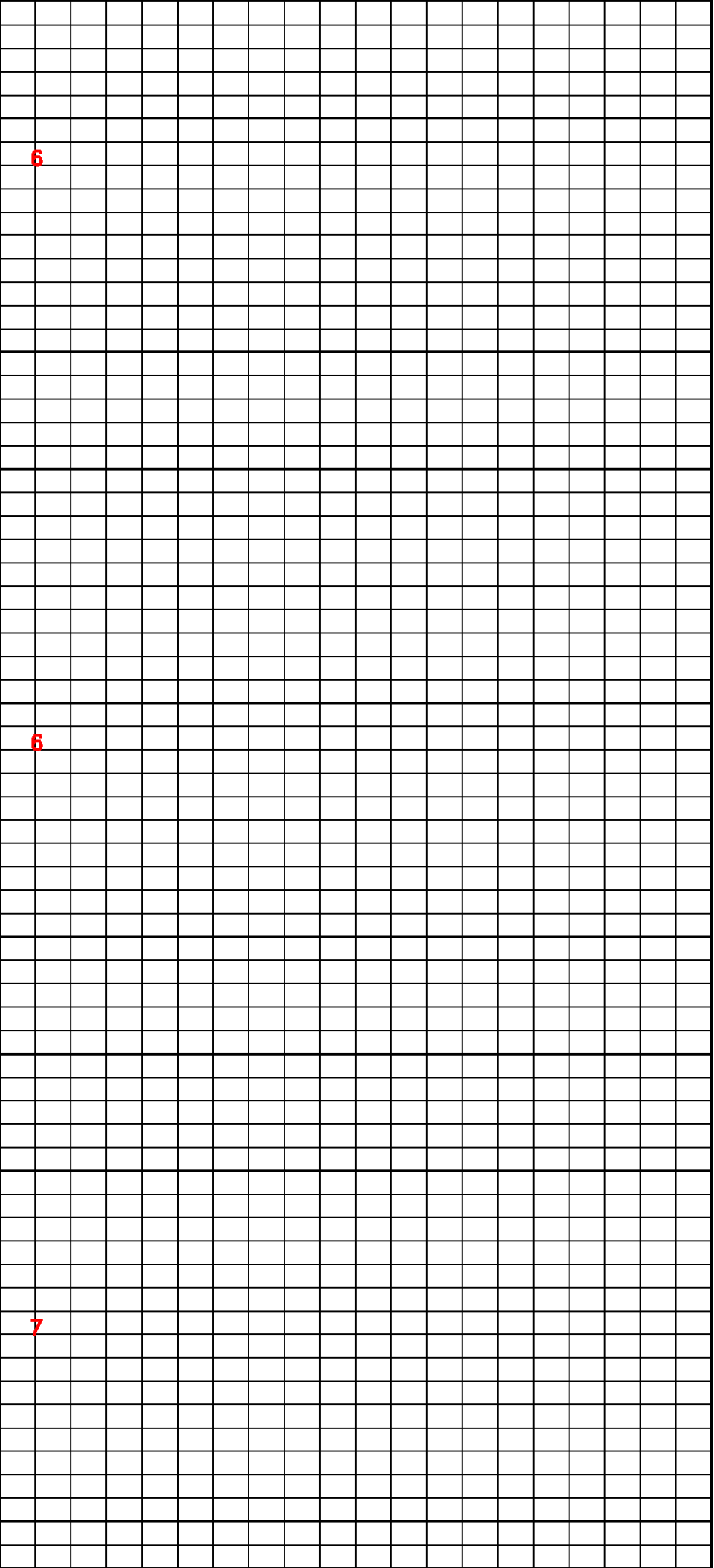
CURVE MEASURE POINT OFFSET

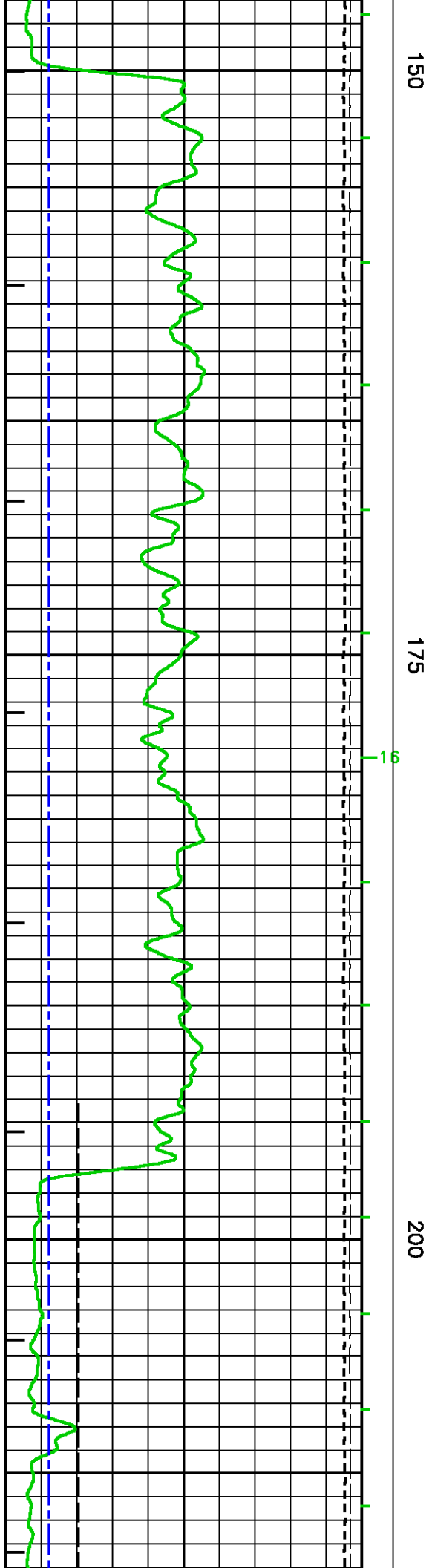
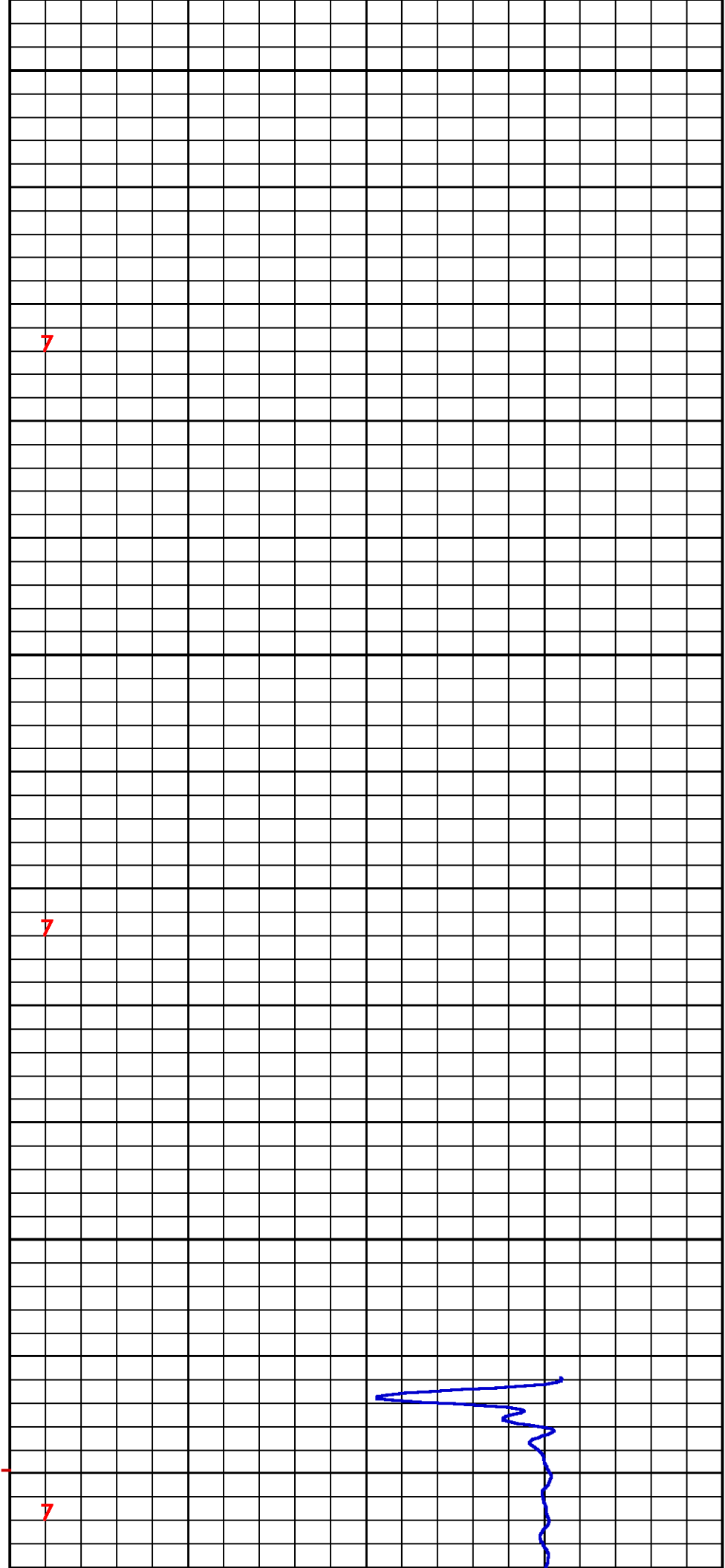
CURVE	OFFSET (m)	CURVE	OFFSET (m)	CURVE	OFFSET (m)	CURVE	OFFSET (m)
BIT	0.00	CHT	0.00	GR	15.39		
CALX	7.92	DT24	0.69	TEN	0.00		

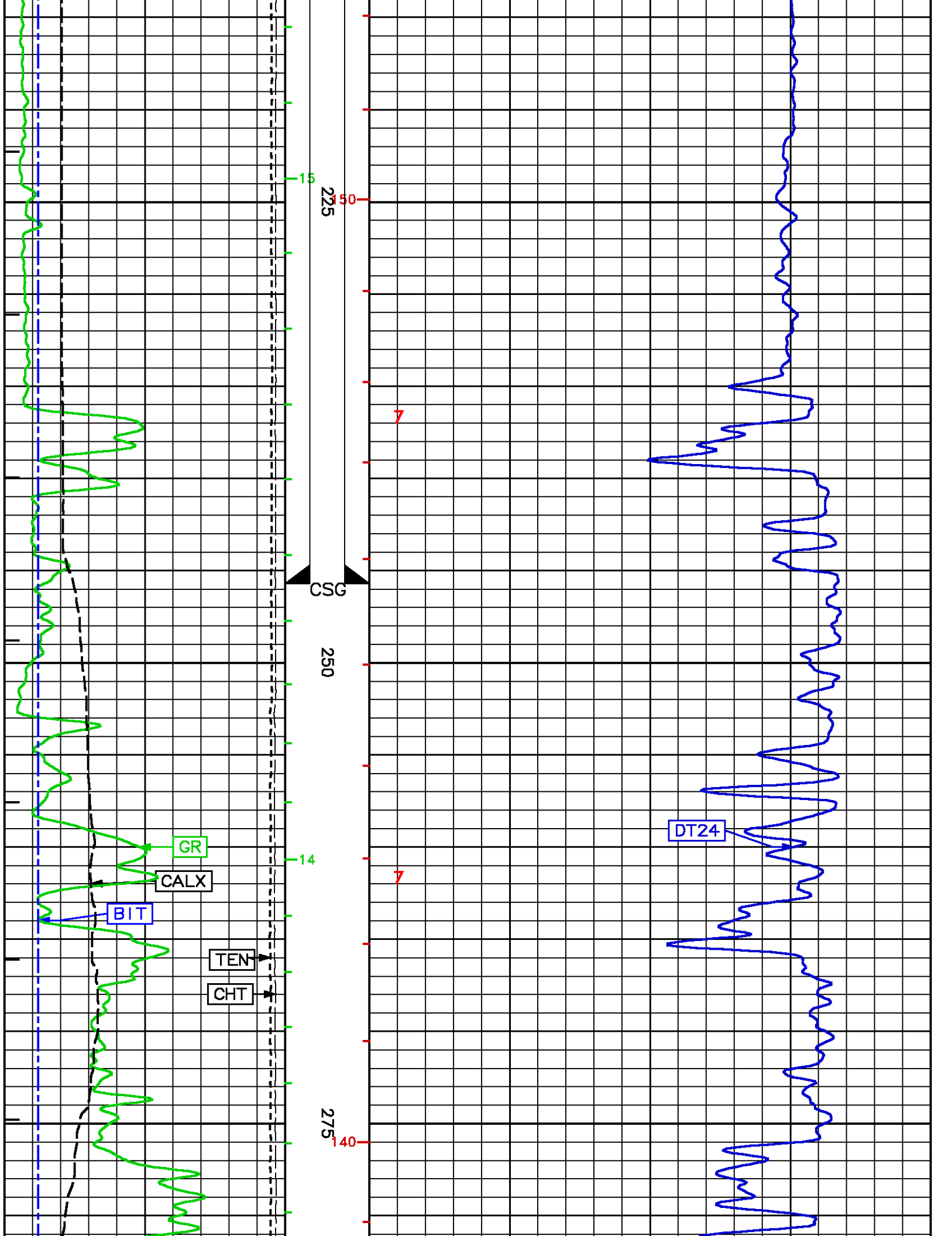
Presentation	: cpu1:/data/pass/vul_hur2/dal_main.pdf [1:240 Scale]
Plot Interval	: 11.7348 - 873.557 Meters
Data File 1	: F1 : cpu1:/data/pass/vul_hur2/1777JxR01.aff
Created On	: Nov 10 05:40:55 2005
Company	: VULCAN MINERALS INC
Well	: ST GEORGE
Field	: ST GEORGE
File Interval	: 11.7348 - 873.557 Meters
Oct	: 1777Jx

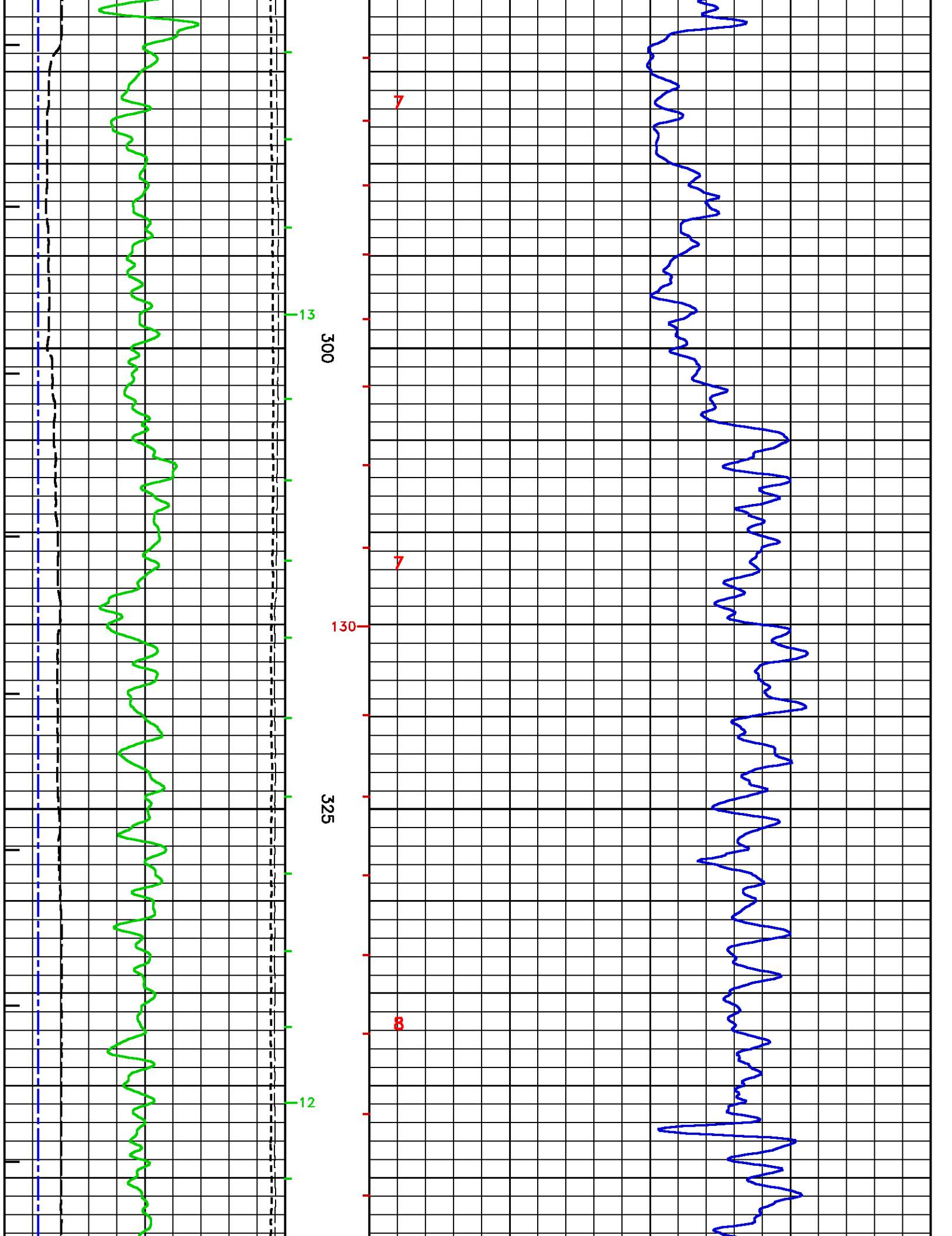


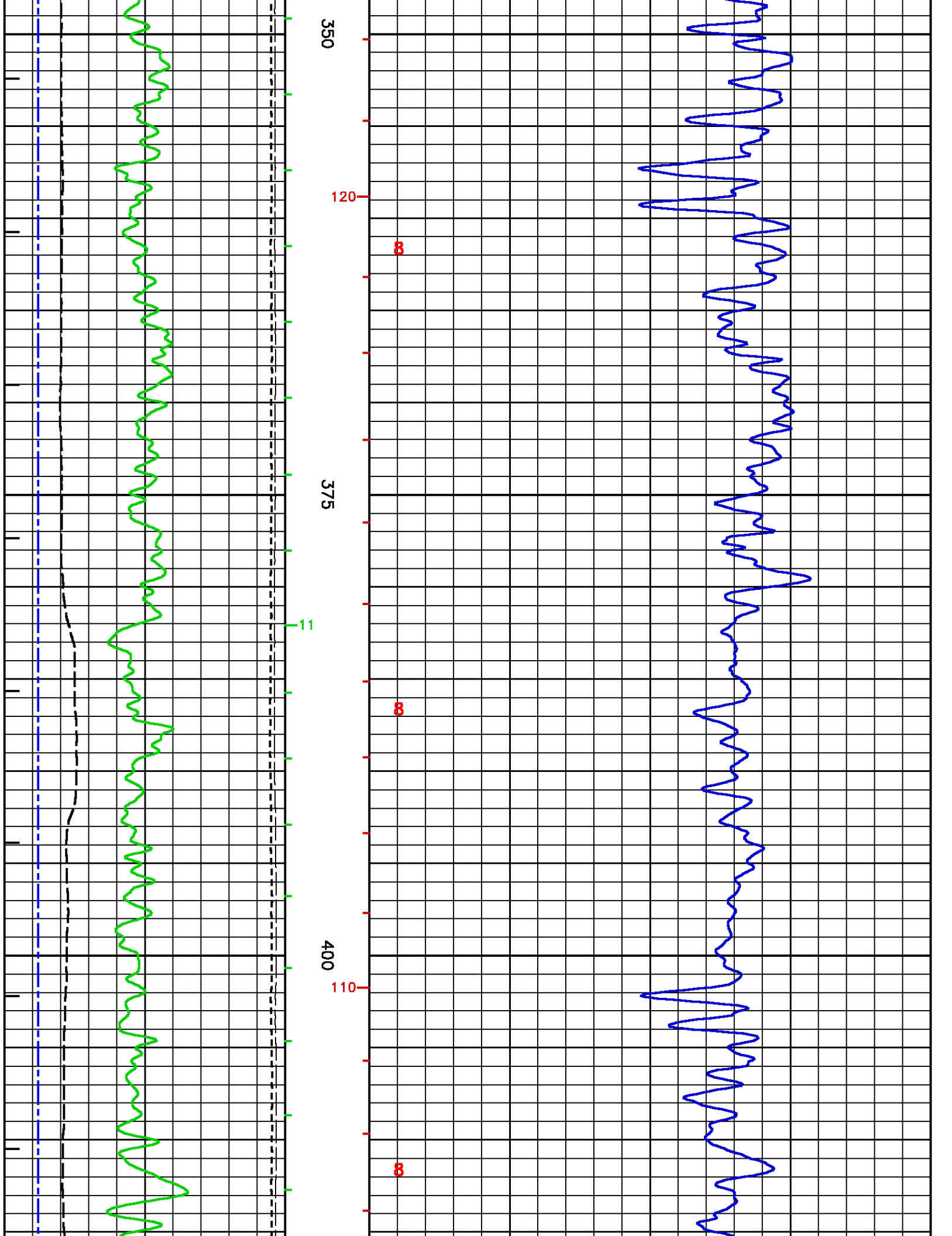


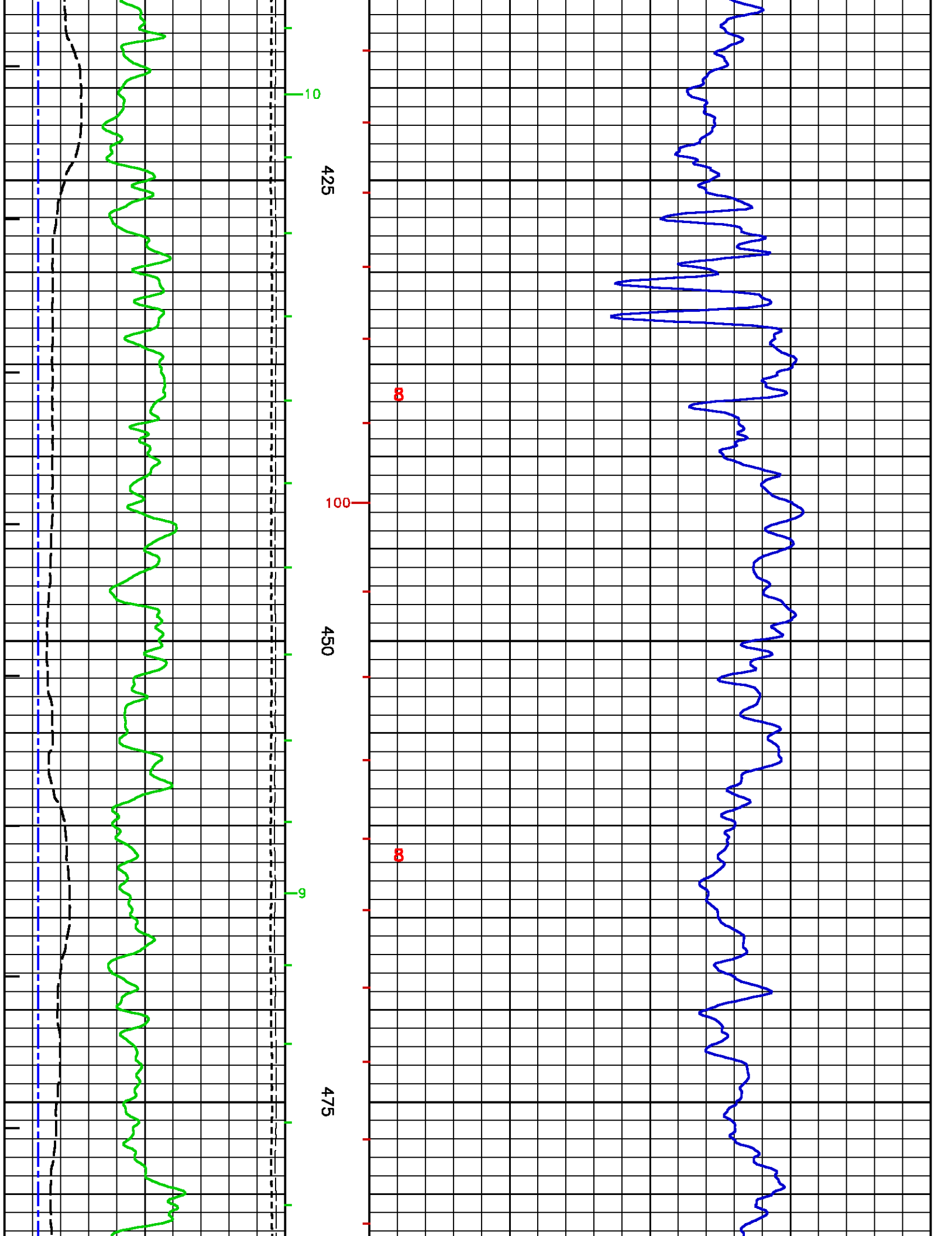


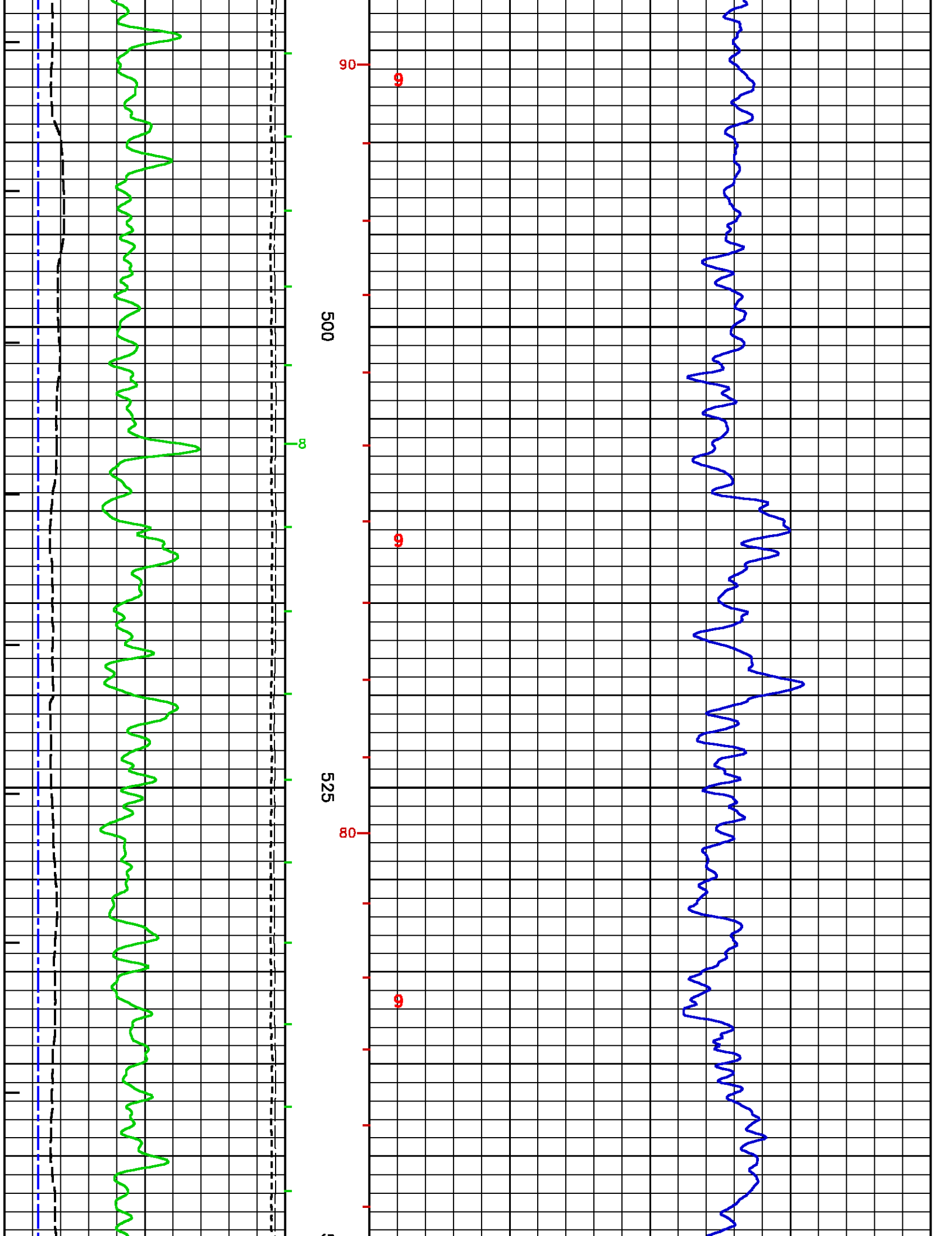


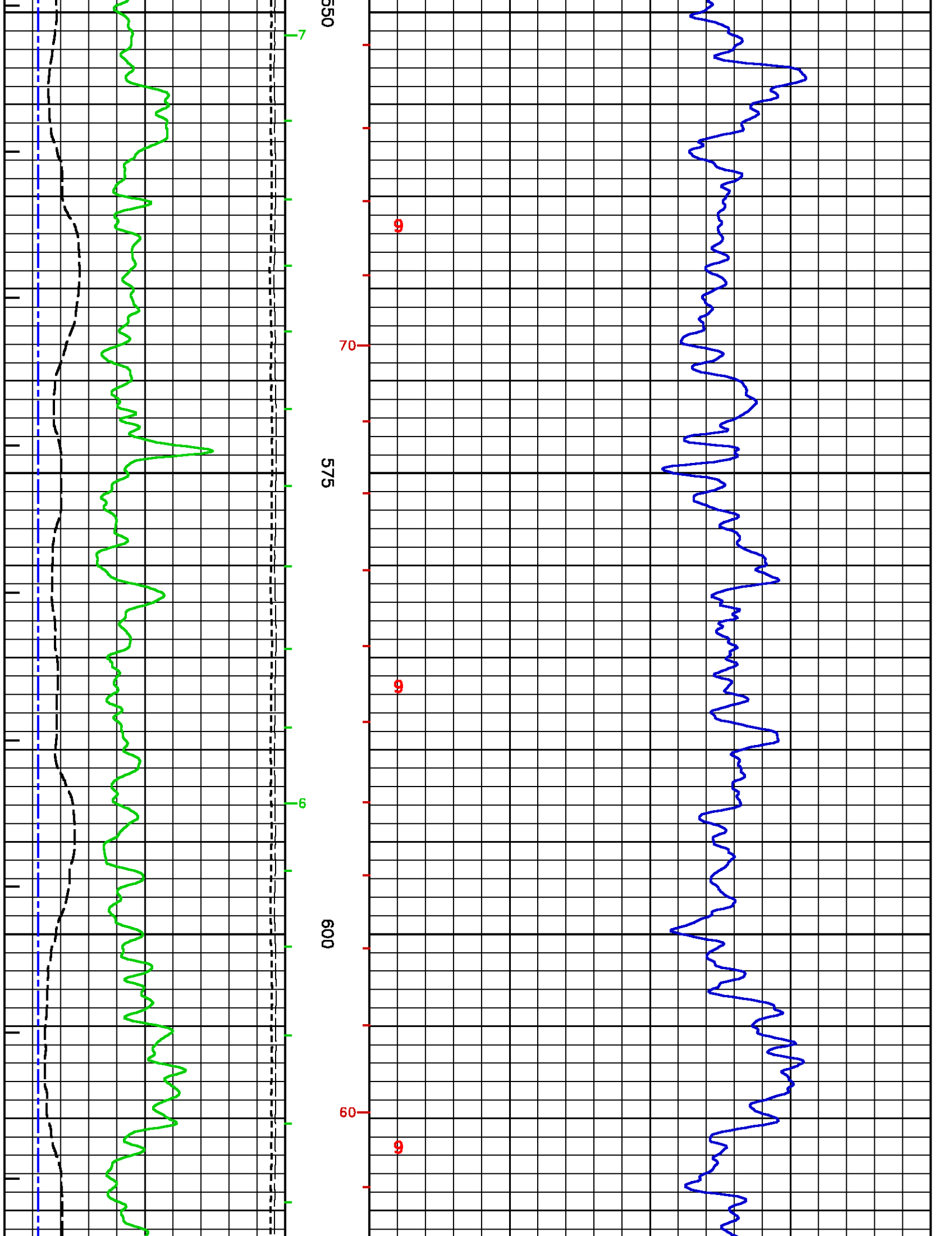


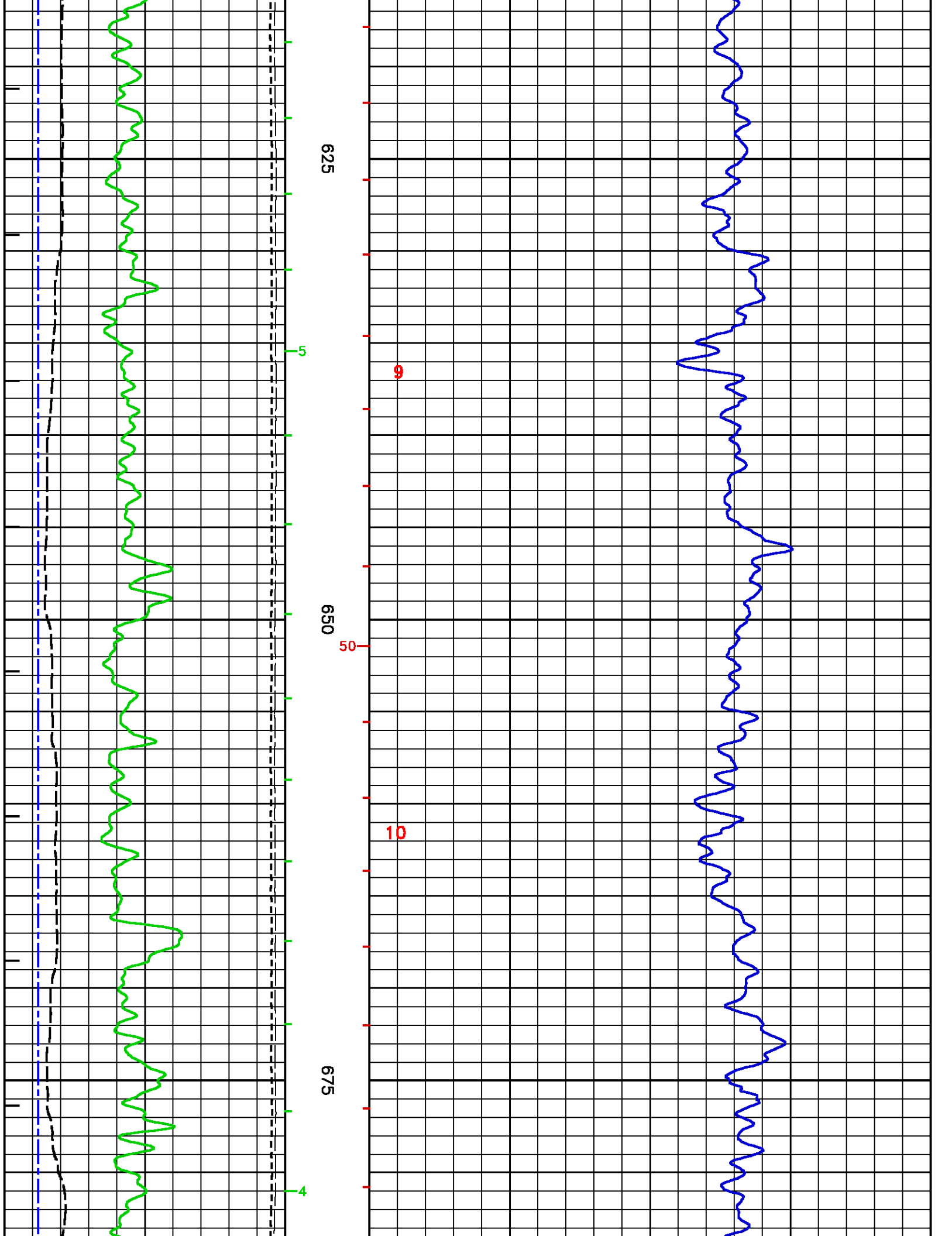


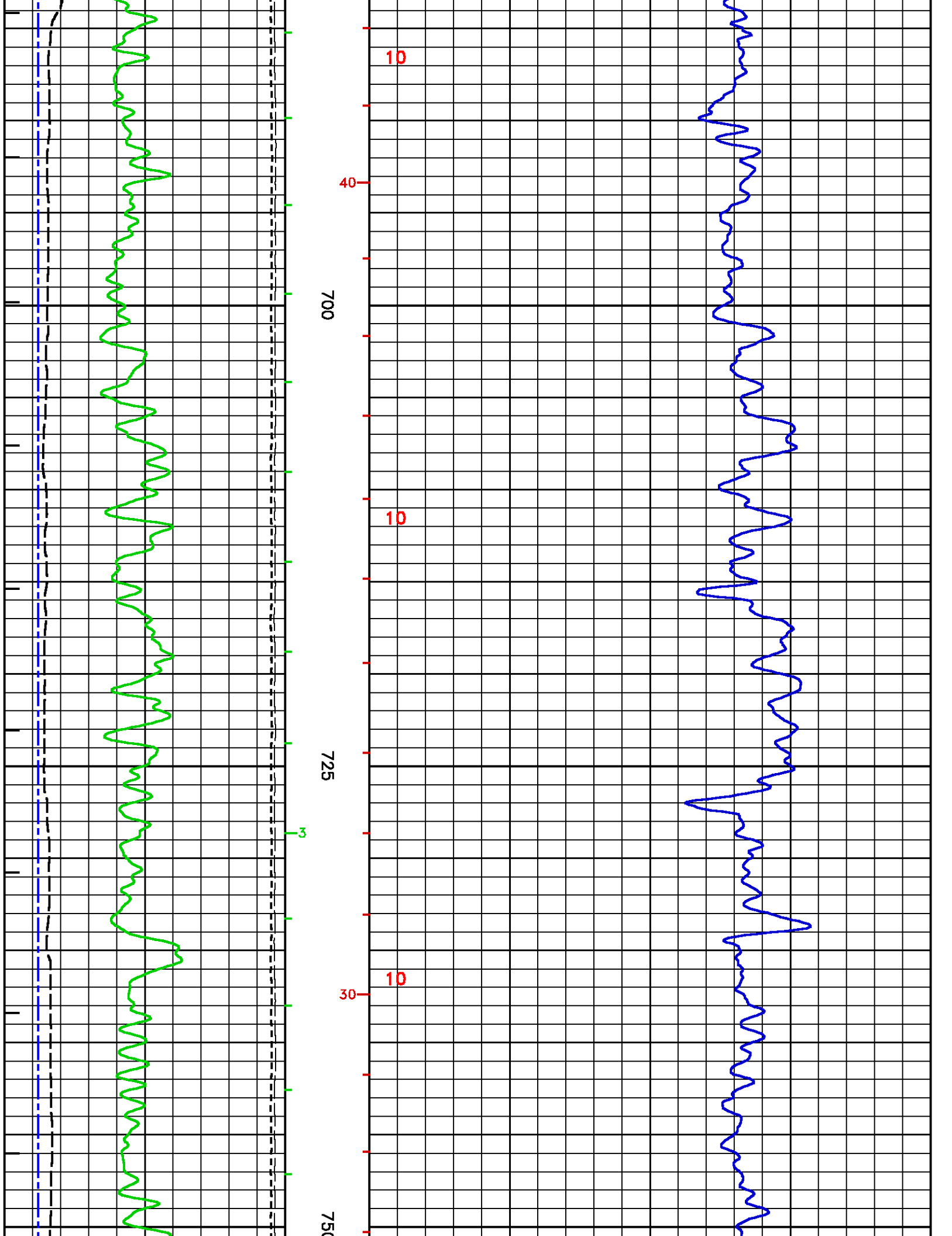


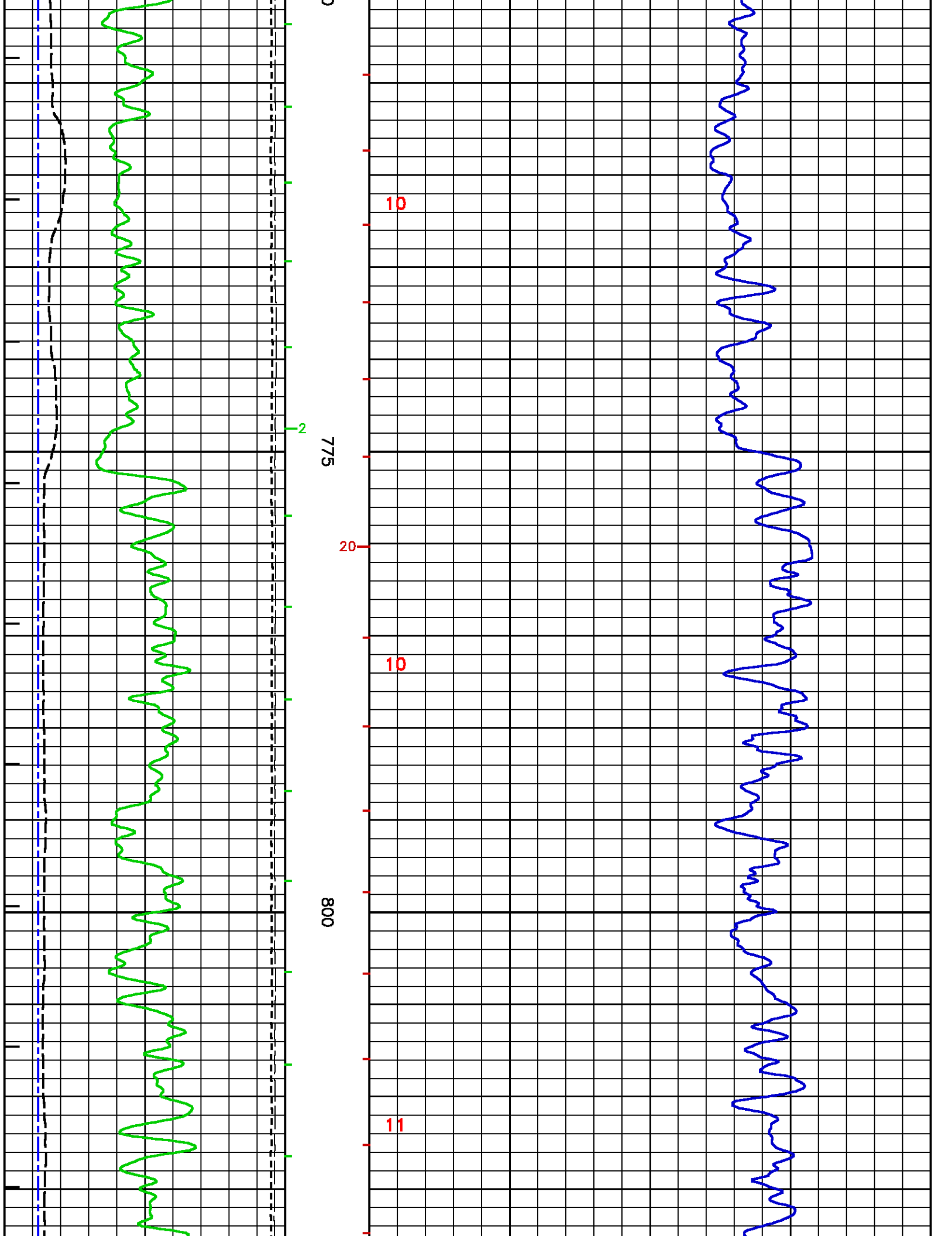


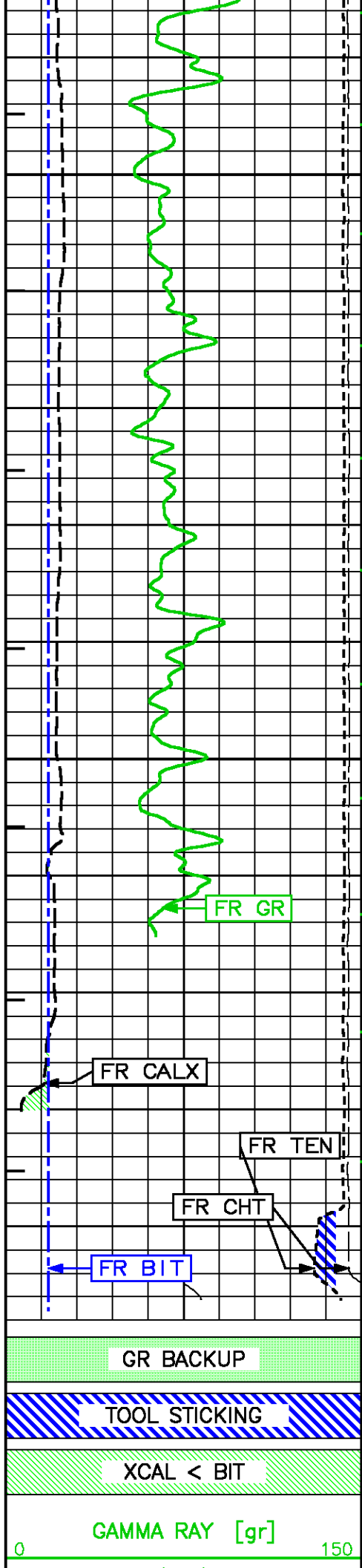












825

10

11

850

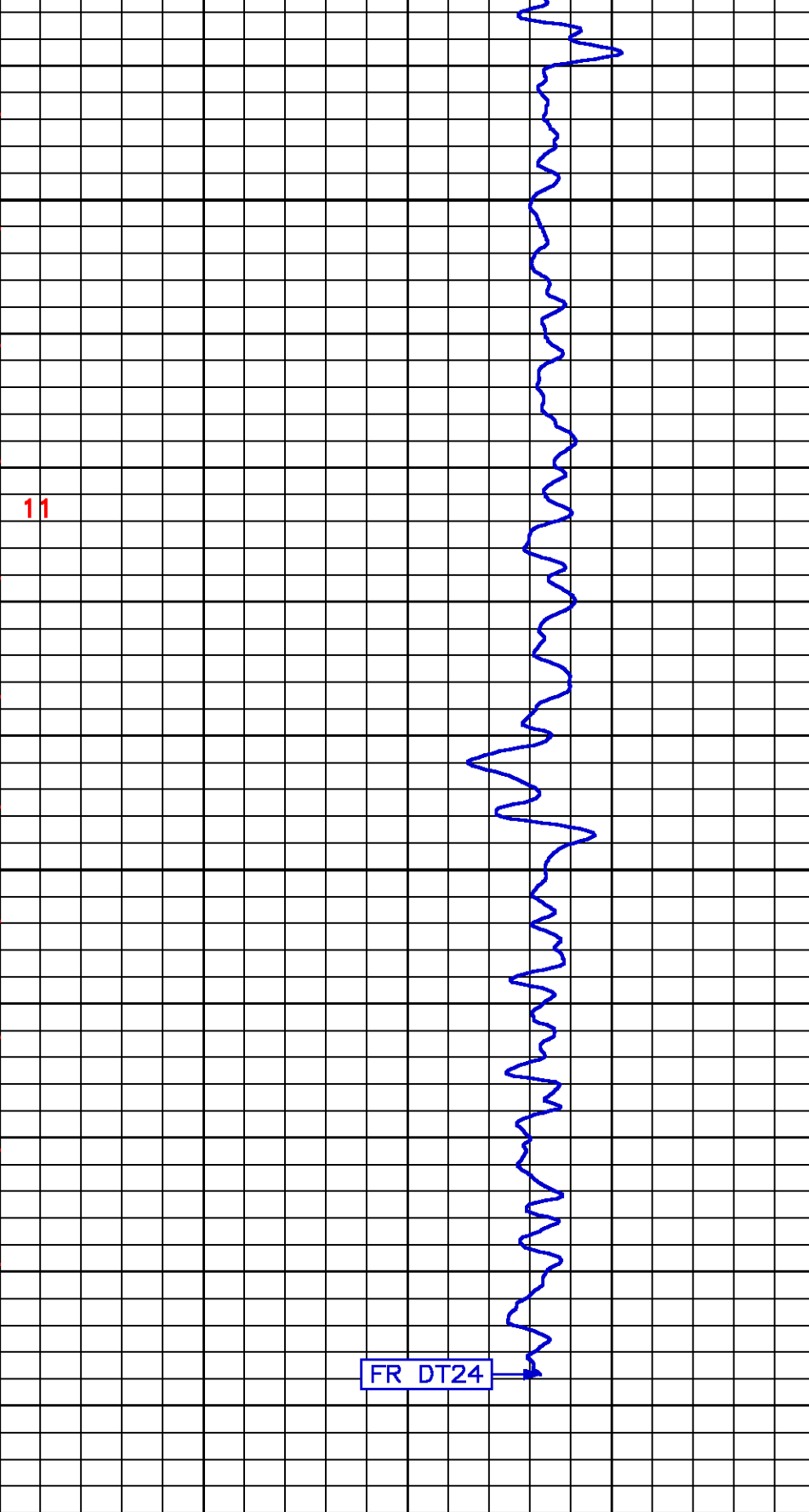
TD

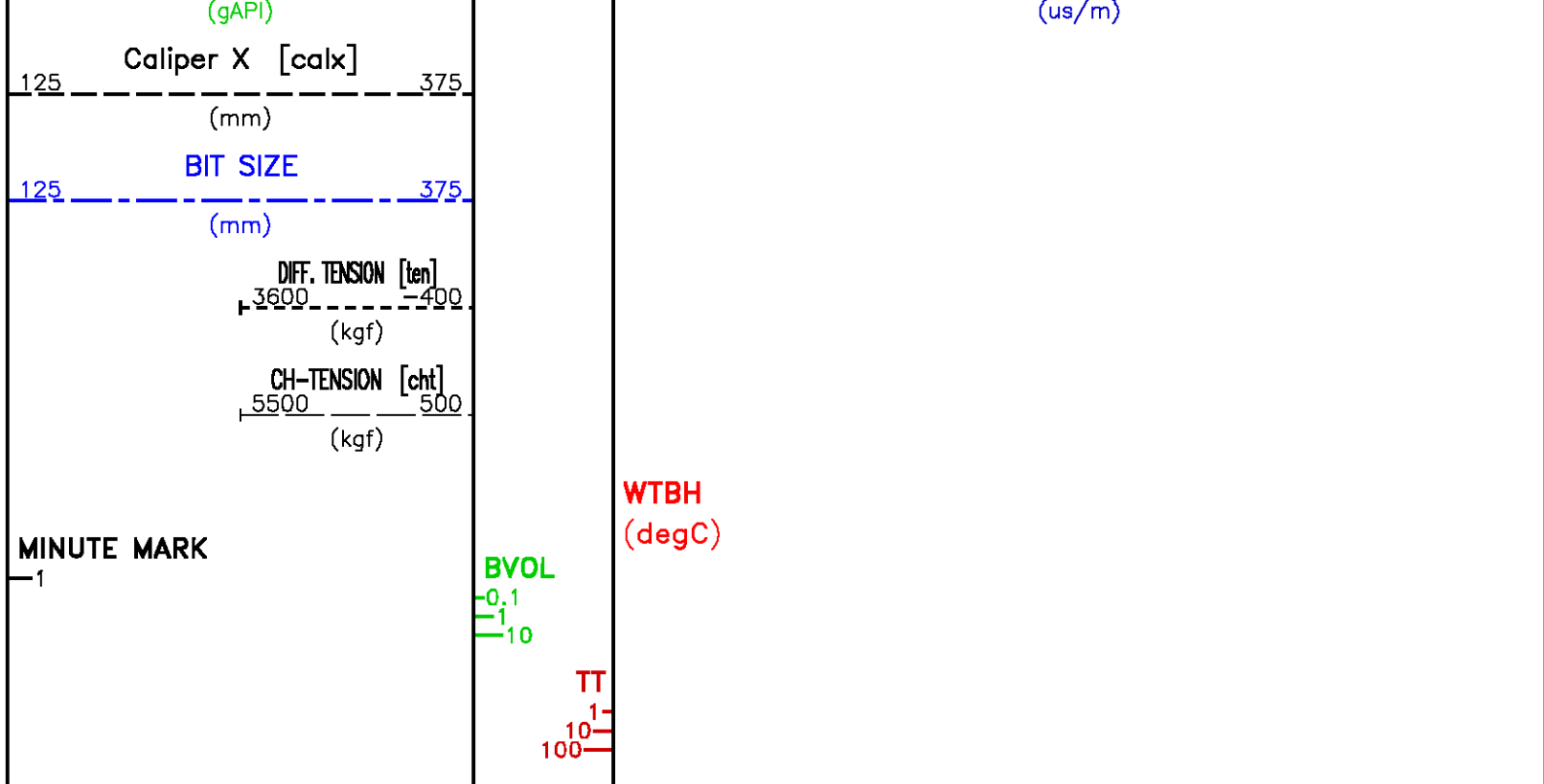
METERS

500

2FT. DELTA-T [dt24]

100





REPEAT PASS

ECLIPS 5.0i Dec 17, 2003
Updates: 1,2,3,32

Pcrplt /main/59

Cplot 7.09
Pdf_Cpp /main/16

Thu Nov 10 05:57:30 2005
Fileview 4.67

PARAMETER AND FILTER SUMMARY REPORT

FILE: /data/pass/vul_hur2/1777JxR02.prm
LOGGING MODE: DEPTH DIRECTION: UP
TOP DEPTH: 762.610 m BOTTOM DEPTH: 874.471 m

SYMMETRIC FILTER

MEASUREMENT TYPE	PARAMETER	VALUE	UNITS	INTERVAL (m)	
CHT	FILTER ()	medium (1)		TOP	BOTTOM
Y AXIS CALIPER	FILTER ()	light (2)		"	"
TENSION	FILTER ()	medium (1)		"	"
X AXIS CALIPER	FILTER ()	medium (1)		"	"
GR	FILTER ()	medium (1)		"	"
DT24	FILTER ()	light (2)		"	"

BOREHOLE & CEMENT

MEASUREMENT TYPE	PARAMETER	VALUE	UNITS	INTERVAL (m)	
CASING - BOREHOLE & CEMENT VOLUME	CASING O.D.	114.300	mm	TOP	BOTTOM
BIT SIZE	BIT SIZE	155.000	mm	"	"

ACOUSTIC POROSITY

MEASUREMENT TYPE	PARAMETER	VALUE	UNITS	INTERVAL (m)	
DELTA T CURVE SELECTION	DT24 SOURCE	FIRST ARRIVAL DT24		TOP	BOTTOM

ACOUSTIC PICK CONTROL

MEASUREMENT TYPE	PARAMETER	VALUE	UNITS	INTERVAL (m)	
------------------	-----------	-------	-------	--------------	--

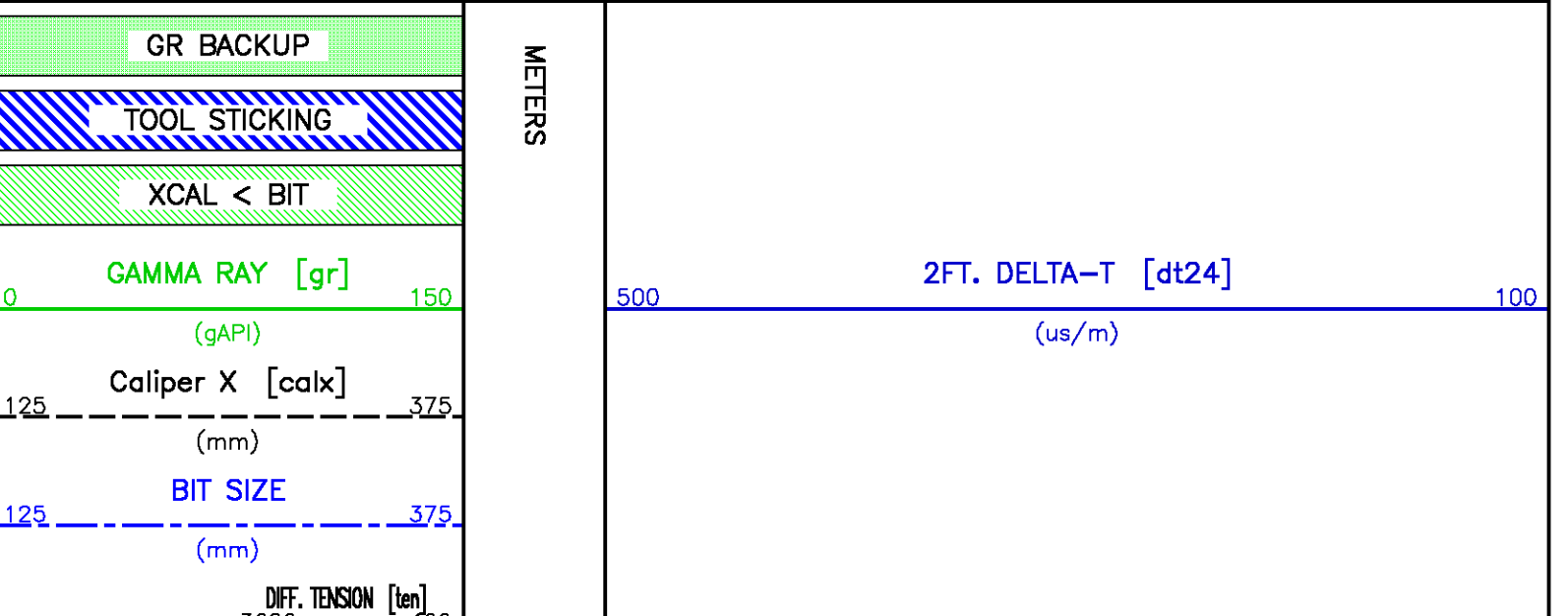
DELTA-T REJECTION RANGE	REJECTION DTmin	131	us/m	TOP	BOTTOM
	REJECTION DTmax	591	us/m	''	''
FIRST ARRIVAL PICK (5 FT)	SEARCH START OFFSET {sfa11*}	252	us	''	''
	SEARCH START OFFSET {sfa12*}	252	us	''	''
	SEARCH START OFFSET {sfa13*}	252	us	''	''
	SEARCH START OFFSET {sfa14*}	252	us	''	''
	SEARCH WINDOW LENGTH	500	us	''	''
	THRESHOLD FACTOR	0.30		''	''
	THRESHOLD MINIMUM {sfa11*}	1.8	pct	''	''
	THRESHOLD MINIMUM {sfa12*}	1.8	pct	''	''
	THRESHOLD MINIMUM {sfa13*}	1.8	pct	''	''
	THRESHOLD MINIMUM {sfa14*}	1.8	pct	''	''
	E3 THRESHOLD	OFF		''	''

ACOUSTIC QUALITY CONTROL					
MEASUREMENT TYPE	PARAMETER	VALUE	UNITS	INTERVAL (m)	
CYCLE SKIP LIMIT	CYCLE SKIP LIMIT	100	us	TOP	BOTTOM

CURVE DESCRIPTION REPORT			
CURVE NAME	CURVE ALIAS	CREATION DATE	CURVE DESCRIPTION
F1:BIT	BIT	Nov 10 05:44:18 2005	BIT SIZE
F1:BVOL	BVOL	Nov 10 05:44:18 2005	BOREHOLE VOLUME
F1:CALX	CALX	Nov 10 05:44:18 2005	CALIPER FROM X AXIS OF X-Y CALIPER(S)
F1:CHT	CHT	Nov 10 05:44:18 2005	CABLE HEAD TENSION
F1:DT24	DT24	Nov 10 05:44:18 2005	INTERVAL TRANSIT TIME OVER 24 INCH INTERVAL
F1:GR	GR	Nov 10 05:44:18 2005	GAMMA RAY
F1:MMRK	MMRK	Nov 10 05:44:18 2005	MINUTE MARK
F1:TEN	TEN	Nov 10 05:44:18 2005	DIFFERENTIAL TENSION
F1:TT	TT	Nov 10 05:44:18 2005	INTEGRATED TRAVEL TIME FROM ACOUSTIC DELTA-T
F1:WTBH		Nov 10 05:44:18 2005	TEMPERATURE OF THE BOREHOLE

CURVE MEASURE POINT OFFSET							
CURVE	OFFSET (m)	CURVE	OFFSET (m)	CURVE	OFFSET (m)	CURVE	OFFSET (m)
BIT	0.00	CHT	0.00	GR	15.39		
CALX	7.92	DT24	0.69	TEN	0.00		

Presentation	: cpu1:/dat1a/pass/vul_hur2/dal_repeat.pdf [1:240 Scale]
Plot Interval	: 742.95 - 873.938 Meters
Data File 1	: F1 : cpu1:/dat1a/pass/vul_hur2/1777JxR02.aff
Created On	: Nov 10 05:44:18 2005
Company	: VULCAN MINERALS INC
Well	: ST GEORGE
Field	: ST GEORGE
File Interval	: 742.95 - 873.938 Meters
Oct	: 1777Jx



3600 -400
(kgf)
CH-TENSION [cht]
5500 500
(kgf)

MINUTE MARK

1

BVOL
0.1
1
10

WTBH
(degC)

TT
1
10
100

750

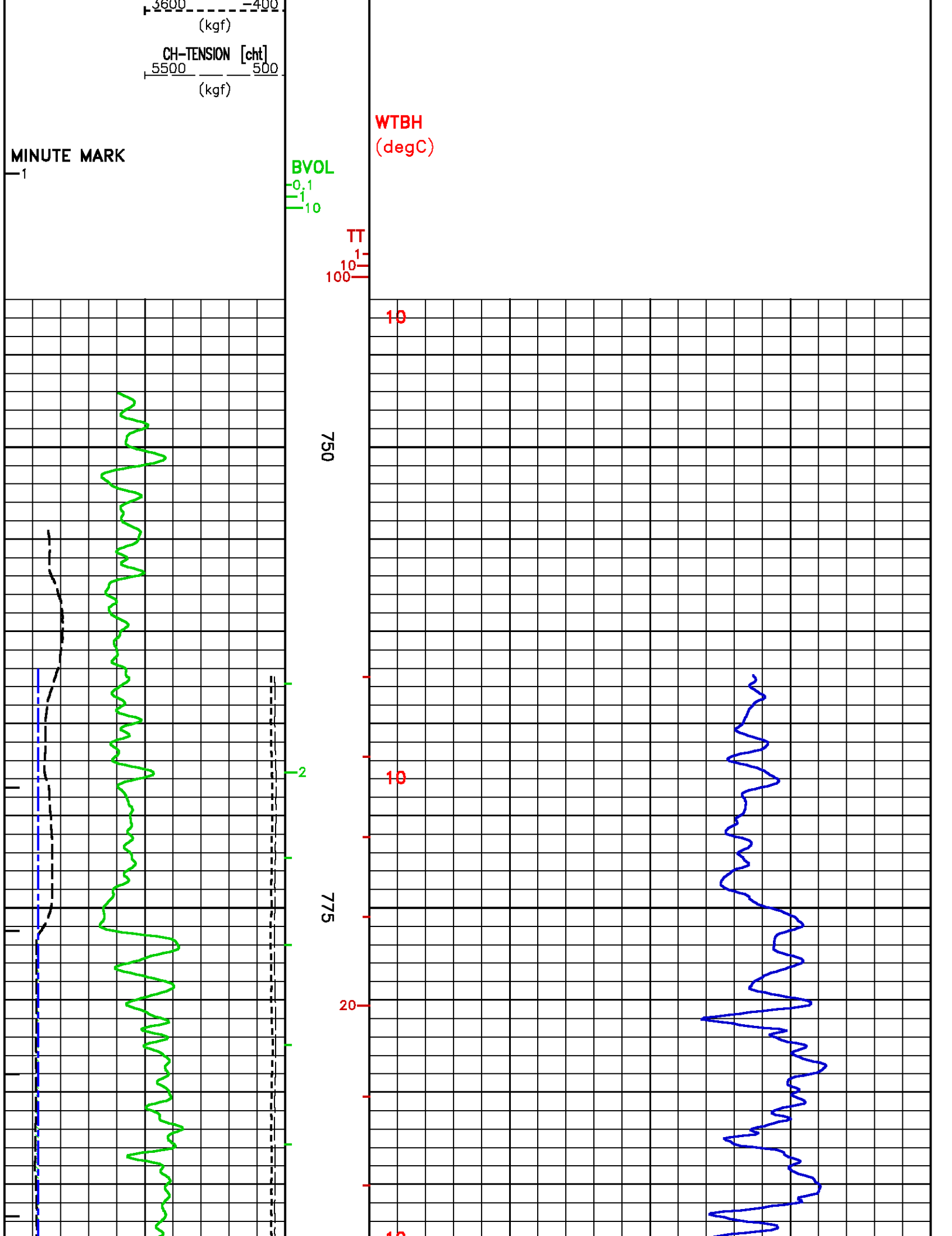
775

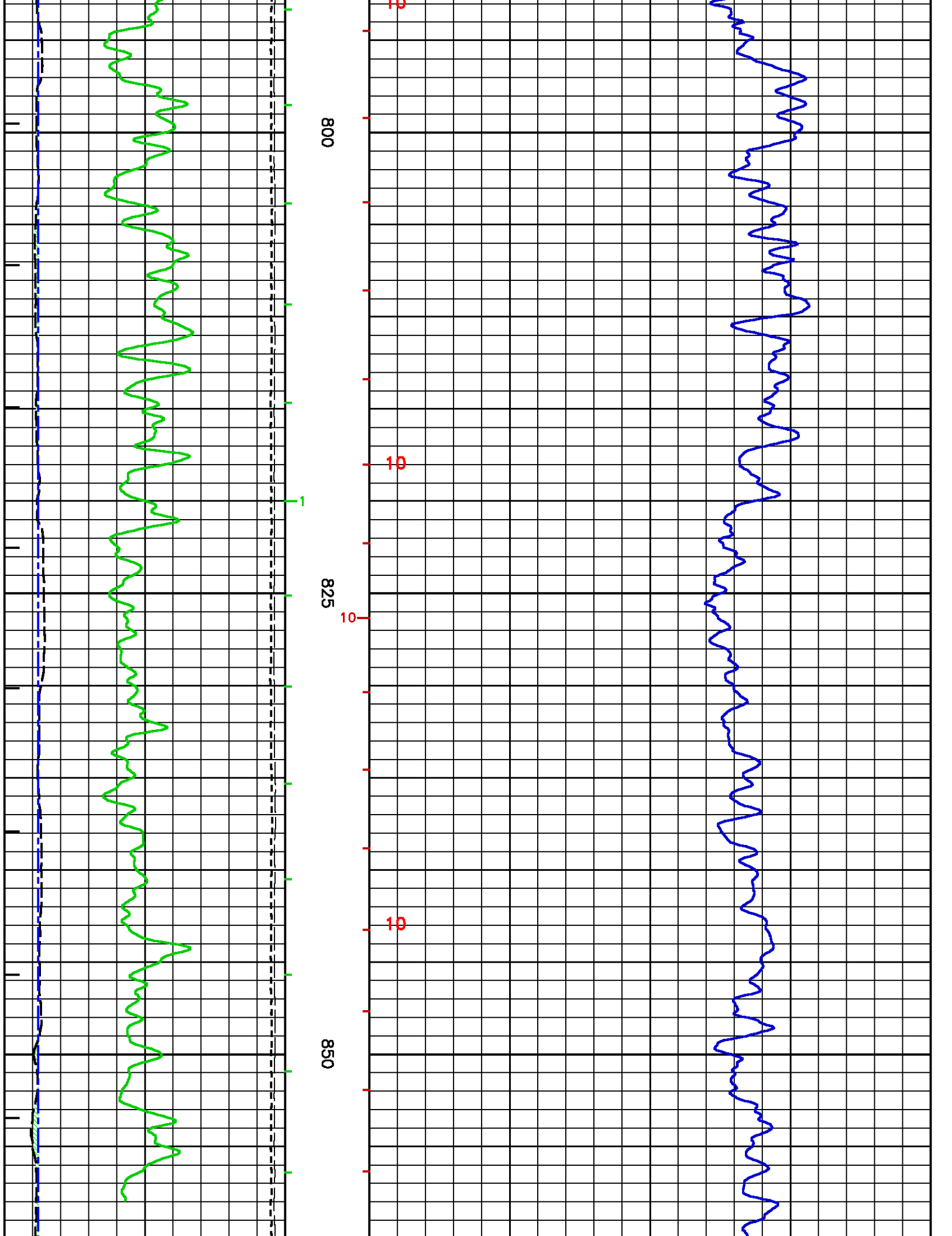
10

10

20

10





TOOL #: 3981XA 179328

DATE/TIME PERFORMED: Fri May 6 18:50:41 2005

UNIT #: 3807TA 008616

	Signal Low (raw)	Signal High (raw)	Scale Mult	Scale Add	Engr Low (kgf)	Engr High (kgf)
CHT	-36.64	334.43	1.90	69.71	0.00	706.00

GR PRIMARY CALIBRATION SUMMARY

TOOL #: 1329XA 153172

DATE/TIME PERFORMED: Sat Apr 9 15:00:41 2005

UNIT #: 3880SA HL8616

CALB JIG #: 4702NK 01-304

	BACKGROUND (cts/s)	CALBRTR ON (cts/s)	CR DIFF (cts/s)	MULT	BACKGROUND (gAPI)	CALBRTR ON (gAPI)	CALBRTR (gAPI)
GR	376.60	1256.29	879.7	0.171	64.22	214.22	150
			870.0 960.0				

GR PRIMARY VERIFICATION SUMMARY

TOOL #: 1329XA 153172

DATE/TIME PERFORMED: Thu May 12 07:25:21 2005

UNIT #: 3807TA 008616

VERI JIG #: 4702NK 01-304

	BACKGROUND (cts/s)	CALBRTR ON (cts/s)	MULT	BACKGROUND (gAPI)	CALBRTR ON (gAPI)	DIFF. (gAPI)
GR	50.80	966.18	0.171	8.66	164.75	156.09
						140.00 160.00

GR BEFORE LOG VERIFICATION SUMMARY

TOOL #: 1329XA 153172

DATE/TIME PERFORMED: Wed Nov 9 21:45:18 2005

UNIT #: 3807TA 008616

VERI JIG #: 4702NK 01-304

	BACKGROUND (cts/s)	CALBRTR ON (cts/s)	MULT	BACKGROUND (gAPI)	CALBRTR ON (gAPI)	DIFF. (gAPI)
GR	143.60	1106.33	0.171	24.49	188.65	164.16
						146.09 166.09

GR AFTER LOG VERIFICATION SUMMARY

TOOL #: 1329XA 153172

DATE/TIME PERFORMED: Thu Nov 10 00:50:37 2005

UNIT #: 3807TA 008616

VERI JIG #: 4702NK 01-304

	BACKGROUND (cts/s)	CALBRTR ON (cts/s)	MULT	BACKGROUND (gAPI)	CALBRTR ON (gAPI)	DIFF. (gAPI)
GR	157.73	1091.58	0.171	26.90	186.13	159.23
						154.16 174.16

SL_I PRIMARY CALIBRATION SUMMARY

TOOL #: 1329XA 153172

DATE/TIME PERFORMED: Tue Oct 19 13:23:24 2004

UNIT #: 3885TA ML4126

CALIBRATOR ID: 4702NA 01-304

	Bkgnd (cts/s)	Cal ON (cts/s)	Mult (gAPI/(cts/s))	Bkgnd (gAPI)	Cal ON (gAPI)	Cal Value (gAPI)
GR-SL (.06-3.5)	160.75	1060.97	0.167	26.79	176.79	150

	Std Rate (cts/s)	Meas Rate (cts/s)	Tool Norm	Std Mult	Log Mult	App Con (pct ppm)
E (.15-3.0)	748	757.9	0.987			
			0.900 1.100			
K				0.01169	0.01154	8.700
U				0.02668	0.02633	20.000
TH				0.07158	0.07064	53.500

	Mult chnl/MeV	Add chnls	Chi Sqr qsa	QCAL	GAIN	QPKS
SPECTRUM	70.986	1.261	1.385	0.994	2996	5
				0.980 1.020		

	P1 .352 MeV	P2 .609 MeV	P3 1.120 MeV	P4 1.765 MeV	P5 2.204 MeV
Std Pk	25.80	44.20	81.00	127.40	159.00
Meas Pk	25.47	44.49	81.76	127.38	156.67
	22.80 28.80	40.20 48.20	76.00 86.00	121.40 133.40	152.00 166.00
Fit Pk	26.25	44.49	80.77	126.55	157.71

SL_I PRIMARY VERIFICATION SUMMARY

TOOL #: 1329XA 153172

DATE/TIME PERFORMED: Tue Oct 19 13:26:55 2004

UNIT #: 3885TA ML4126

CALIBRATOR ID: 4702NA 01-304

	Bkgnd (cts/s)	Cal ON (cts/s)	Mult (gAPI/(cts/s))	Bkgnd (gAPI)	Cal ON (gAPI)	Cal Value (gAPI)
GR-SL (.06-3.5)	159.98	1070.00	0.167	26.66	178.29	152
						135 165

	Std rate (cts/s)	Meas rate (cts/s)	Tool norm	Std Mult	Log Mult	App Con (pct ppm)
E (.15-3.0)	748	777.4	0.987			
K				0.01169	0.01154	8.969 7.830 9.570
U				0.02668	0.02633	20.469 18.000 22.000
TH				0.07158	0.07064	54.917 48.150 58.850

	Mult chnl/MeV	Add chnls	Chi Sqr qsa	QCAL	GAIN	QPKS
SPECTRUM	71.507	0.813	0.521	0.997 0.980 1.020	2996	5

	P1 .352 MeV	P2 .609 MeV	P3 1.120 MeV	P4 1.765 MeV	P5 2.204 MeV
Std Pk	25.80	44.20	81.00	127.40	159.00
Meas Pk	25.38 22.80 28.80	44.48 40.20 48.20	81.66 76.00 86.00	127.27 121.40 133.40	157.90 152.00 166.00
Fit Pk	25.98	44.36	80.90	127.02	158.41

SL_I BEFORE LOG VERIFICATION SUMMARY

TOOL #: 1329XA 153172

DATE/TIME PERFORMED: Wed Nov 9 21:52:12 2005

UNIT #: 3807TA 008616

CALIBRATOR ID: 4702NA 01-304

	Bkgnd (cts/s)	Cal ON (cts/s)	Mult (gAPI/(cts/s))	Bkgnd (gAPI)	Cal ON (gAPI)	Cal Value (gAPI)
GR-SL (.06-3.5)	138.69	1070.17	0.167	23.11	178.32	155 135 165

	Std rate (cts/s)	Meas rate (cts/s)	Tool norm	Std Mult	Log Mult	App Con (pct ppm)
E (.15-3.0)	748	765.4	0.987			
K				0.01169	0.01154	8.831 7.830 9.570
U				0.02668	0.02633	20.154 18.000 22.000
TH				0.07158	0.07064	54.072 48.150 58.850

	Mult chnl/MeV	Add chnls	Chi Sqr qsa	QCAL	GAIN	QPKS
SPECTRUM	70.024	2.501	0.722	0.991 0.980 1.020	2895	5

	P1 .352 MeV	P2 .609 MeV	P3 1.120 MeV	P4 1.765 MeV	P5 2.204 MeV
--	----------------	----------------	-----------------	-----------------	-----------------

Std Pk	25.80	44.20	81.00	127.40	159.00
Meas Pk	26.60	45.17	81.55	126.78	156.05
	22.80 28.80	40.20 48.20	76.00 86.00	121.40 133.40	152.00 166.00
Fit Pk	27.15	45.15	80.93	126.09	156.83

SL_II AFTER LOG VERIFICATION SUMMARY

TOOL #: 1329XA 153172

DATE/TIME PERFORMED: Thu Nov 10 00:51:24 2005

UNIT #: 3807TA 008616

CALIBRATOR ID: 4702NA 01-304

	Bkgnd (cts/s)	Cal ON (cts/s)	Mult (gAPI/(cts/s))	Bkgnd (gAPI)	Cal ON (gAPI)	Cal Value (gAPI)
GR-SL (.06-3.5)	155.82	1072.19	0.167	25.96	178.66	153
						135 165

	Std rate (cts/s)	Meas rate (cts/s)	Tool norm	Std Mult	Log Mult	App Con (pct ppm)
E (.15-3.0)	748	768.3	0.987			

K	0.01169	0.01154	8.864
			7.830 9.570
U	0.02668	0.02633	20.230
			18.000 22.000
TH	0.07158	0.07064	54.274
			48.150 58.850

	Mult chnl/MeV	Add chnls	Chi Sqr qsa	QCAL	GAIN	QPKS
SPECTRUM	70.477	2.426	0.640	0.997	2895	5
				0.980 1.020		

	P1 .352 MeV	P2 .609 MeV	P3 1.120 MeV	P4 1.765 MeV	P5 2.204 MeV
Std Pk	25.80	44.20	81.00	127.40	159.00
Meas Pk	26.63	45.50	81.93	127.41	157.05
	22.80 28.80	40.20 48.20	76.00 86.00	121.40 133.40	152.00 166.00
Fit Pk	27.23	45.35	81.36	126.82	157.76

CN PRIMARY CALIBRATION SUMMARY

TOOL #: 2446XA 173080

DATE/TIME PERFORMED: Fri Sep 23 16:23:00 2005

UNIT #: 3807TA 008616

CALIBRATOR #: 2437XB 1131140

SOURCE #: 4717XS 048462

MEASURED CPS	DEADTM CPS	CORR CPS	DTC SSN/LSN	NOMINAL SSN/LSN	CORRECTION FACTOR	POROSITY (pu)
75.00	75.00	75.00	75.00	75.00	75.00	75.00

LSN 754.45 768.36

SSN 1980.28 2061.95

RATIO 2.68356 2.75100 1.02513

0.97000 1.07000

CN 21.358

CN PRIMARY VERIFICATION SUMMARY

TOOL #: 2446XA 173080

DATE/TIME PERFORMED: Fri Sep 23 16:31:51 2005

UNIT #: 3807TA 008616

ICE BLOCK #: 4717ND 00T-210

	MEASURED CPS	DEADTM CORR CPS	DTC SSN/LSN	CORRECTION FACTOR	DTC CORR SSN/LSN	POROSITY (pu)
LSN	1002.36	1027.09				
SSN	1253.32	1285.57				
RATIO			1.25167	1.02513	1.28436	
CN						3.255

CN BEFORE LOG VERIFICATION SUMMARY

NOT DONE

CN AFTER LOG VERIFICATION SUMMARY

TOOL #: 2446XA 173080

DATE/TIME PERFORMED: Thu Nov 10 07:07:29 2005

UNIT #: 3807TA 008616

ICE BLOCK #: 4717ND 00T-210

	MEASURED CPS	DEADTM CORR CPS	DTC SSN/LSN	CORRECTION FACTOR	DTC CORR SSN/LSN	POROSITY (pu)
LSN	986.59	1010.54				
SSN	1192.53	1221.70				
RATIO			1.20895	1.02513	1.24044	
CN						2.773

1.255 5.255

CAL PRIMARY CALIBRATION SUMMARY

TOOL #: 2228MA 153038

DATE/TIME PERFORMED: Fri Sep 23 18:29:49 2005

UNIT #: 3807TA 008616

	SMALL RING (raw)	LARGE RING (raw)	MULT	ADD	SMALL RING (mm)	LARGE RING (mm)
CALIPER	1415.0	2361.5	0.16101	-75.43520	152.400	304.800

CAL BEFORE LOG VERIFICATION SUMMARY

TOOL #: 2228MA 153038

DATE/TIME PERFORMED: Thu Nov 10 02:39:27 2005

UNIT #: 3807TA 008616

	I.D. (raw)	MULT	ADD	I.D. (mm)
CALIPER	1530.2	0.16101	-80.28400	166.100

CAL AFTER LOG VERIFICATION SUMMARY

TOOL #: 2228MA 153038

DATE/TIME PERFORMED: Thu Nov 10 05:22:21 2005

UNIT #: 3807TA 008616

	I.D. (raw)	MULT	ADD	I.D. (mm)
CALIPER	1598.2	0.16101	-80.28400	177.049
				153.400 178.800

ZDL PRIMARY CALIBRATION SUMMARY

TOOL #: 2228MA 153038

DATE/TIME PERFORMED: Fri Sep 23 17:54:07 2005

UNIT #: 3807TA 008616

CALB. BLOCK SET: 2225XA 112691

CS SOURCE #: 4703NT 001012

	SSD-NDTC (cts/s)	HRD1-NDTC (cts/s)	HRD2-NDTC (cts/s)	SHR	DEN (kg/m ³)	CORR (kg/m ³)	PE (b/e)
MG BLOCK (LO PE)	10938.9	4475.3	5445.4	0.676 0.625 0.725	1691.000	9.000	2.187
AL BLOCK	5490.5	457.6	582.0		2683.000	-12.000	
AL+SHIM (CORR)	7624.1	803.4	987.2		2607.000	169.000	
MG+SHIM (HI PE)		2152.7	2766.9	0.281 0.260 0.310			10.177
RATIO MG/AL	1.99 1.97 2.07	9.78 8.80 10.40	9.36 8.75 9.75				

BACKGROUND CS PEAK AM PEAK

(cts/s)	CHANNEL #	CHANNEL #
952.7	228.2	23.1
	225.0	235.0
	21.0	25.0

ZDL PRIMARY VERIFICATION SUMMARY

TOOL #: 2228MA 153038

DATE/TIME PERFORMED: Fri Sep 23 18:02:40 2005

UNIT #: 3807TA 008616

VERI. JIG #: 4704NA 1120/1128

	SSD-NDTC (cts/s)	HRD1-NDTC (cts/s)	HRD2-NDTC (cts/s)	SHR	DEN (kg/m ³)	CORR (kg/m ³)	PE (b/e)
FIELD BLOCK	8710.0	1853.1	4424.2	0.186	1829.779	-71.057	15.527

ZDL BEFORE LOG VERIFICATION SUMMARY

NOT DONE

ZDL AFTER LOG VERIFICATION SUMMARY

TOOL #: 2228MA 153038

DATE/TIME PERFORMED: Thu Nov 10 06:59:59 2005

UNIT #: 3807TA 008616

VERI. JIG #: 4704NA 1120/1128

	SSD-NDTC (cts/s)	HRD1-NDTC (cts/s)	HRD2-NDTC (cts/s)	SHR	DEN (kg/m ³)	CORR (kg/m ³)	PE (b/e)
FIELD BLOCK	8562.4	1841.3	4404.6	0.186	1817.419	-85.670	15.543
				0.166	0.206	1804.779 1854.779	-96.057 -46.057



COMPANY VULCAN MINERALS INC
 WELL HURICANE #1 (BACKSTRETCH #2)
 FIELD ST GEORGES BAY
 PROVINCE NEWFOUNDLAND

FILE NO:

API NO:

LOCATION:

LIC: 2005-116-01-03

ELEVATIONS:

KB 3.3 M

DF

GL 135 M

LAT 377200

LONG 5344600 M

DATE

10-NOV-2005

Baker Atlas

